

2012 Milton Update



2011

- Site preparation
 - January to February
- Production
 - 3,880,000 tonnes
 - Started March 1st
 - Ended December 16th
- Blasting
 - Started mid February
 - Ended November
- Shipping
 - January to March 7:00am to 4:00pm
 - April to year end 5:30am to 5:00pm

2012

- Site preparation
 - January to September
- Production
 - 3,900,000 tonnes
 - Start March 1st
 - End November
- Blasting
 - Start mid February
 - End November
- Shipping
 - January to March 7:00am to 4:00pm
 - April to year end 5:30am to 5:00pm

Site preparation 2012

MILTON QUARRY 2012 STRIPPING PLAN (EXTENDED TO ADDRESS T-LINE ROADWAY)



Site preparation 2013

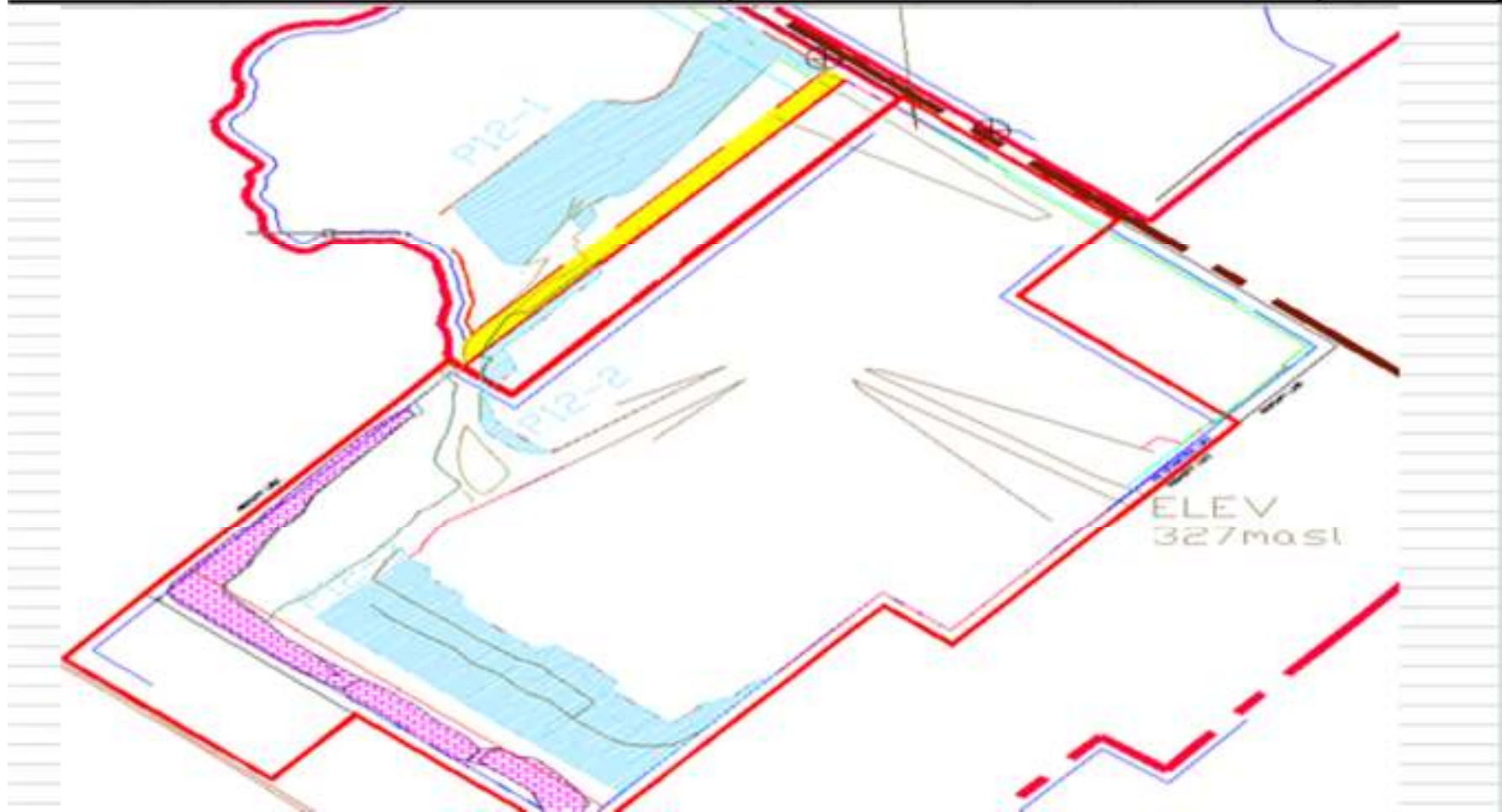


Site preparation 2014-16



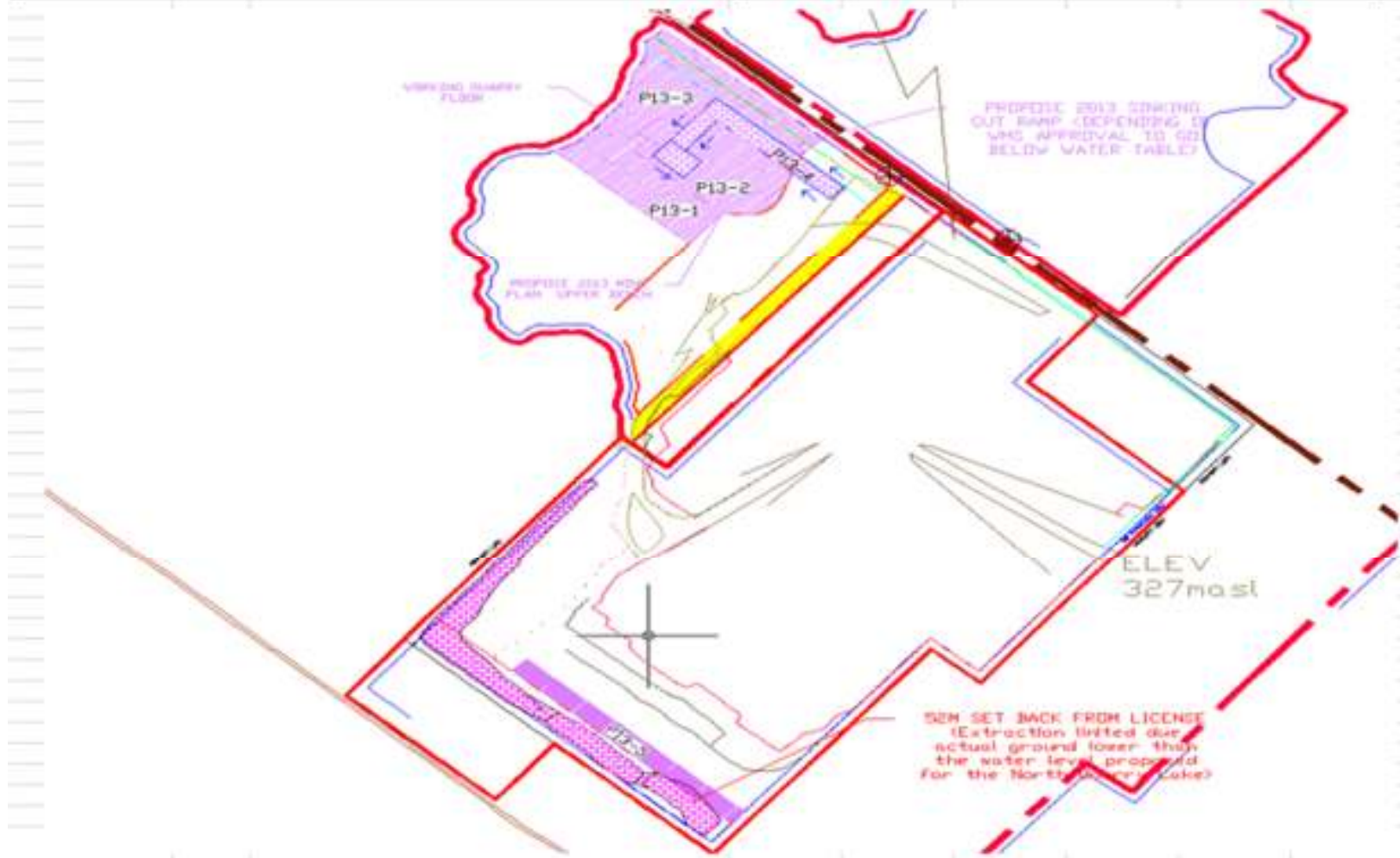
Mining plan 2012

MILTON QUARRY 2012 MINE PLAN (PHASE 1 & PHASE 2 SITE PREP AREA)



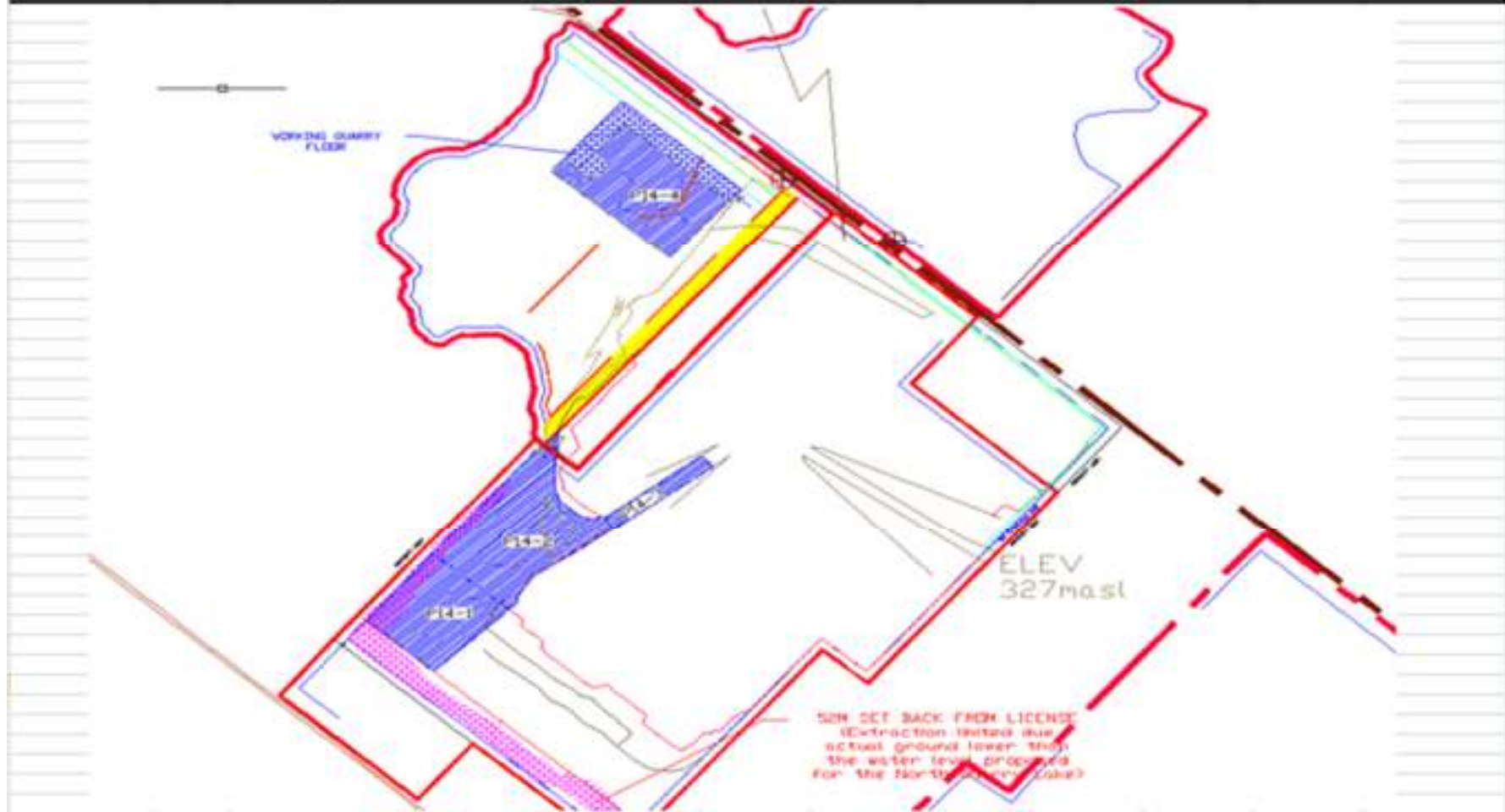
Mining plan 2013

MILTON QUARRY 2013 MINE PLAN (+ DEVELOPM'T OF SINKING CUT RAMP)



Mining plan 2014-16

MILTON QUARRY 2014 MINE PLAN - END PH1 & START PH2 LOWER BENCH

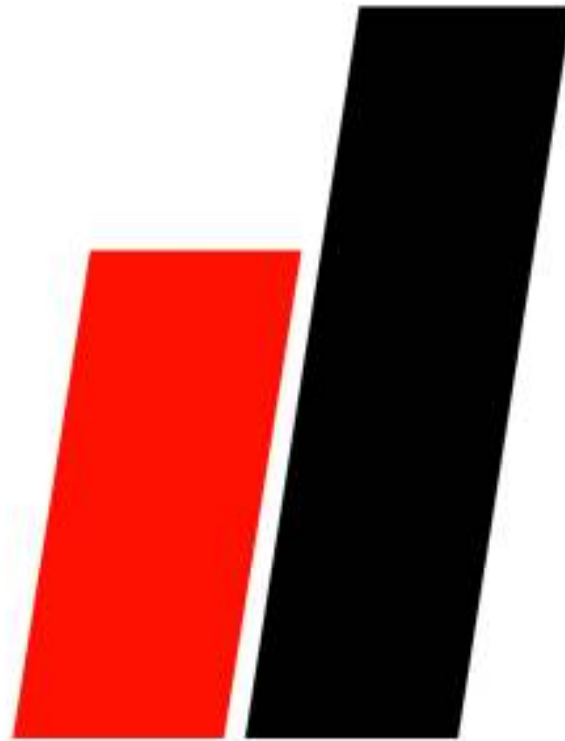


Other Activities

- Open House – June 2
- Earth Day – April 28 (Tree Planting)

Other Meeting Topics

- Protected species and ecology at the quarry
- Sand and Gravel pit visit “Millcreek”
- February 6th SERA meeting with Lorne Johnson – Executive Director
- Other meeting topics?



Dufferin Aggregates

A division of Holcim (Canada) Inc.